

of the
Tuolumne County
Historical Society
Sonora, California

Museum Hours:

Tues. & Thurs. (10-4)
Wed. (1-4)
Fri. & Sat. (10-3:30)

History Research Center:

Tues.—Fri. (9-4)

Letter from the President

Fellow Members,

At our Christmas Open House on Dec 12, I expressed my appreciation for the great group of volunteers we currently have, and I think it's worth mentioning here again for those who were not present that evening. Throughout this entire past year there has been a lot of positive, cooperative energy going on at the Museum and the History Research Center. A growing group of volunteers is spending an increasing number of hours on a very interesting variety of projects. I am encouraged by the smiling faces I see in the Museum and History Research Center.

I have expressed our general need for additional volunteers in previous newsletters, but this time I would like to express a specific need for help to keep the Museum open. The Genealogical Society provides volunteers to run the Museum on Tuesdays, Thursdays, and Saturdays. But for Wednesdays and Fridays in the Museum, we currently have only one volunteer.

A few more volunteers who are able to cover a two-hour shift on either Wednesday or Friday would help us keep the Museum open for more visitors. Operating the Museum involves sitting around for two hours chatting with the other volunteers while waiting for visitors. When they arrive, a volunteer greets them, gives them a brief description of the Museum, and answers any questions they may have. On-the-job training involves going around with an experienced volunteer and watching how it's done.

The variety of visitors is always interesting, but one of the things I enjoy the most about volunteering is that every time I go to the Museum I see something I have never seen before or learn something I didn't know before.

We currently need volunteers on Wednesday morning (10-12) and on Friday morning and afternoon (10-12, 12-2:00, 2:00-4:00). If you are interested in trying out a two hour per week Museum volunteer position, please call our HRC Coordinator, Brad Fisher, or send an email to: info@tchistory.org.

I would also like to recognize the service and contributions of departing Board of Directors member Lisa Mayo. Lisa became a director in 2016. She was instrumental in organizing a successful Sonora Chamber Mixer at the Museum and in getting a TCHS flyer printed. Lisa also helped us maintain a close relationship with the local tourist information center, Visit Tuolumne County, where she serves as executive director. We will miss Lisa on the board, but intend to continue our close partnership with Visit Tuolumne County.

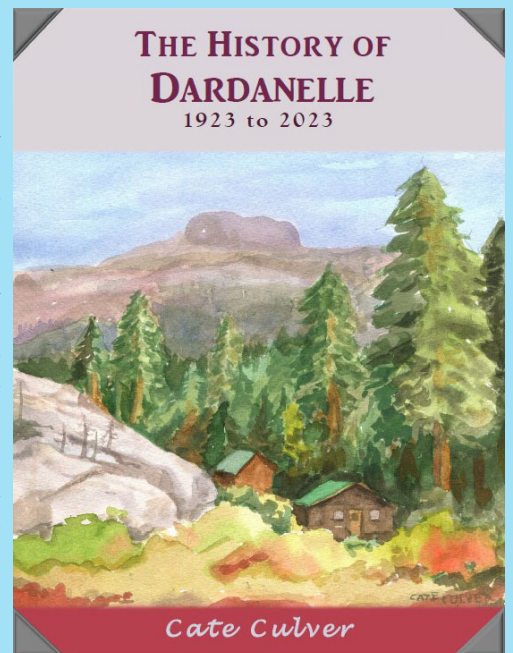
New Book by Cate Culver



*Cate Culver at
TCHS Christmas
Open House*

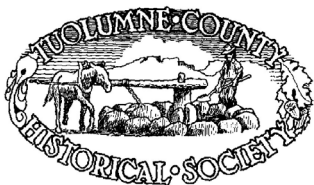
TCHS has published a new book by Cate Culver. Dardanelle consisted of a resort, ranger station (one of the first buildings to appear), campground, and seventy-five cabins. Cate explains its one hundred years of history with period photographs.

The book sells at the Tuolumne County Museum for \$30 to non-members and \$27 to members. You can also find the book at the Mountain Bookshop, Thirsty Prospector, and Columbia Mercantile 1855.



Welcome New Members:

Gudrun Erickson
Erika Lawson



Lucy Harrison Franklin

By Sherrin Grout

When I search for a subject for these occasional columns, I look through the photograph collection first and try to find an image that intrigues me. This time I came across an image identified as Mrs. Dr. Franklin, nee Lucy Harrison. I was surprised as I had no idea there was an image of this woman, whose life reflects a range of the commonplace and unusual for a woman of that era.

In 1824, Lucy Harrison was born in Merfield, England to Benjamin and Sarah Harrison. Two other children followed, Mary and George, before the family moved to the United States. Living first in Utica, New York, the family moved to Wilmington, Delaware, where Benjamin Harrison opened a bakery. Mary stayed in Utica, having married William Newell, who followed the news of the Gold Rush and traveled to California in 1849. After settling her husband's business affairs, Mary joined her family in Wilmington.

Mary stayed in Wilmington until she decided, against her husband's wishes, to join him in Columbia, California. Not wishing his daughter to travel alone, Harrison joined Mary, leaving his eldest daughter, Lucy, to manage the Wilmington bakery and its employees, deal with his other business affairs, and to oversee the family, which by this time included at least two more sons and two daughters. Seeing Mary settled in Columbia and satisfied that she was happy, Harrison returned to Wilmington, where Lucy continued to operate the bakery.

At the end of 1855, Mary's husband, William Newell, died, leaving her alone in Columbia. Once again Benjamin Harrison traveled to Columbia, this time with one of his younger daughters, Lizzie, and his son, Ben. Harrison had tried to sell his business and land before he left, but the sale dragged on, so Lucy was left to manage her father's business, employees, and family, once again. Dealing with her family may have been the most difficult part of the affair since the children were from a not-too-happy second marriage and were unwilling to be supervised by a half-sister.

And then, there was the bakery. The initial purchaser had changed his mind, so Lucy was keeping the business open while trying to sell it, looking for buyers for the family home, and shopping for and sending goods to her sister's business in Columbia. Letters from her father and sister contain long lists of goods to be sent—children's patterns for clothes; trimmings such as buttons; pins; tape; cotton thread; needles; bonnet ribbons; different patterns; a dozen fine bonnets; and on and on and on.

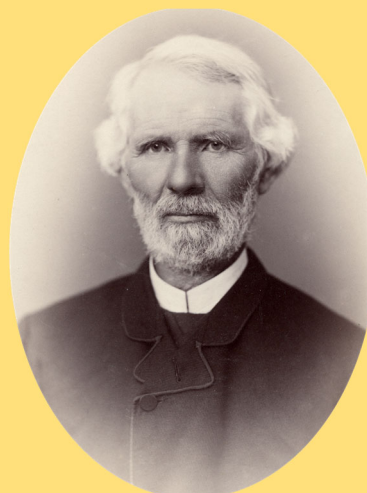
Finally, after months of dealing with all of this, the business was sold, the house was rented, and Lucy and her sister and brother joined the family in Columbia. But life was still not easy for Lucy. She worked in her father's store, which she ran by herself when her father returned to the east coast to finally sell all his property.

Lucy met and married Dr. John J. Franklin in 1862, but this marriage had problems. When there were signs of abuse, Mary's second husband, Dr. Joseph Pownall, threatened to bring in the law if Franklin did not change his ways. In 1868, Lucy took refuge in the Sole Trader Act, passed by the state legislature in 1852. The act enabled a married woman independently to own and operate her own business. After Dr. Franklin's death in 1875, Lucy remained in Sonora, until a stroke forced her to move in with Mary and Joseph Pownall until her death in 1882.

Lucy is buried in the Columbia Masonic Cemetery, next to her father.



Tuolumne County Museum, TP9706
Lucy Harrison Franklin



Tuolumne County Museum, TP10335 & TP10333
Mary Harrison Newell Pownall & Dr. Joseph Pownall

Museum Corner

Christmas Open House



Top L-R: Sandy Fisher, Kathy Boone
Seated L-R: Cate Culver, Linda Emerson



Kim Baker

2025 TCHS Board of Directors

Top L-R: Chuck Holland, Linda Emerson, Cheri Holmes, Kathy Boone
Seated L-R: Sandy Fisher, Betty Sparagna, Linda Crocker, Mike Ghiorso



New Board Member: Mercedes Tune

New Inductee into the Order of the Wheelhorse

At the Christmas Open House, President Chuck Holland presented Cheri Holmes with the Wheelhorse pin. The origin of this award derives from the respect given to the wheelhorse of a team of horses. The wheelhorse is known for its diligence and dependability.

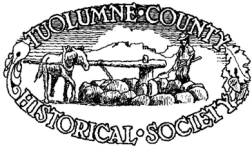
Cheri has certainly earned her right to be a new inductee. Native to Tuolumne County, Cheri started volunteering in 2017 as a 4th grade tour trailer. Because of her talents as an accountant, she was asked in 2018 to be on the Board of Directors as our treasurer, where she has remained.

Getting us through Covid and several changes in our point-of-sale system has been a challenge, but with Cheri's dedication of time and talent, TCHS is a better run organization.

Thank you, Cheri!



Cheri Holmes and Chuck Holland



**TUOLUMNE COUNTY
HISTORICAL SOCIETY**

158 Bradford Street
SONORA, CA 95370-4920

ADDRESS SERVICE REQUESTED

Non-Profit Organization
U S POSTAGE PAID
Permit #15
Sonora, California

*The Mission of the Tuolumne County
Historical Society shall be to discover, collect,
preserve, and disseminate knowledge about
the history of Tuolumne County and
the State of California.*

The *Historian* is published several times a year by the Tuolumne County Historical Society, 158 Bradford St., Sonora, CA 95370-4920 for the benefit of the membership. There is no charge for the *Historian*. (In compliance with Public Law 103-123, 39 U.S.C. 3656 subsection [j].)

Tuolumne County Museum & History Research Center
158 Bradford Street, Sonora, CA 95370
Museum: 209-532-1317—History Research Center: 209-532-4227
<http://tchistory.org>, info@tchistory.org

PAY MEMBERSHIP DUES NOW!

Just a reminder that TCHS membership is from January 1 thru December 31. Your 2025 membership is due now, unless you have already paid. You can send your dues to:

TCHS/Membership
158 Bradford St.
Sonora, CA 95370

Or, pay online:

<https://tchistory.org/product-category/membership/>

Your membership helps to maintain the History Collection, which includes over 35,000 photographs of local people and places; vintage clothing and household items; business and industry-related artifacts; records relating to landmarks, commerce, railroads, logging, mining, water development, architecture, geographical and community history; and biographies of pioneer families.

TCHS BOARD OF DIRECTORS

Chuck Holland—President
Open—1st & 2nd Vice President
Cheri Holmes—Treasurer
Betty Sparagna—Recording Secretary
Kathy Boone—Membership Secretary

DIRECTORS

Linda Crocker
Linda Emerson
Sandy Fisher
Mike Ghiorso
Mercedes Tune

MUSEUM BOARD OF GOVERNORS

Allan Bryant, Chair
Tina Gordon
Winnie LoVine
Mike Macon
Ruth Pedro
Betty Sparagna

HRC Coordinator—Brad Fisher
coordinator.tcmuseum@gmail.com

Change in address or contact information?

Contact Kathy Boone—

cookie48@mlode.com or 209-984-3359